



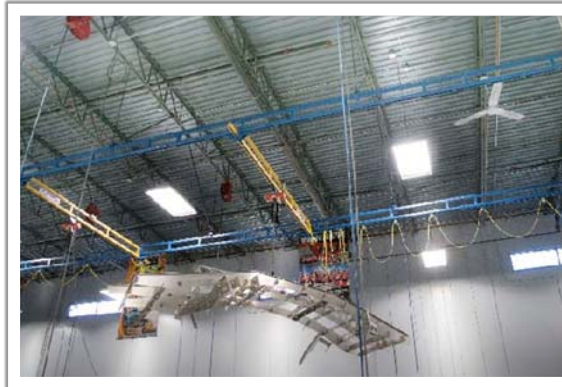
Opening Floor Space, A Safer Workplace and An Increase in Productivity

Industry:
Car Racing

Product:
Race Cars

The Problem:
Cluttered floor space

The Solution:
Gorbelt WSC



At Stewart Haas Racing, race cars are built and prepared from start to finish to finish line. Previously, in-house built “A” style frame cranes were used to position the grids on the cars during the build process. Each department had several of these “A” frame style cranes creating difficulty when moving the grids around on the cars to check the templates. Not only did this create a cluttered workspace but also a hazard and the slowing down of productivity.



With a Gorbelt Work Station Crane in place the build process has become more efficient on the manufacturing of these high precision machines. And, according to Bobby Sheffield, Finish Fab Supervisor at Stewart Haas Racing, the Gorbelt system has made the shop safer by not having production tools on the

floor during the day- to-day operations. He also states that the crew working on the cars really like this system due to the opening up of the floor space and especially in the ease of movement, making their job much easier in such a rapid production environment.