

**Runway to Header Weldment Connections for Free Standing Work
Station Cranes Utilizing Three Hole Plate Design When OAH is Critical**

1. Suspend runway section under installed support structure (refer to the enclosed General Arrangement Drawing for recommended dimensions and runway location).
2. Using the three hole clamp plates and hardware provided, attached runway section to header weldment, as shown in Figure 1.

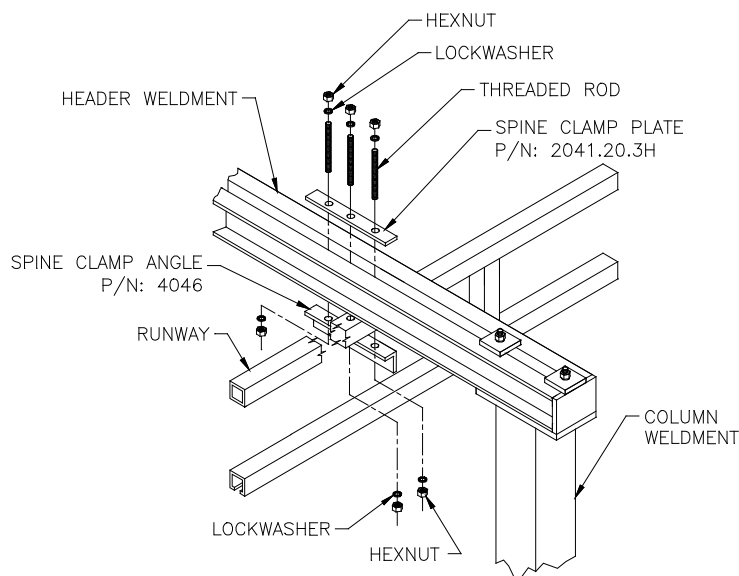


Figure 1.

3. Check to make sure runway is level (within +/- 1/8") and parallel to opposite runway (within +/- 1/4") over a 20'-0" distance.
4. Tighten hanger hardware to 95 ft/-lbs. of torque per nut. There must be a minimum of two threads showing at both ends of the threaded rod.

WARNING

Do not deviate from the bridge "span" dimension shown on the General Arrangement Drawing.