

SOFT TOUCH™ ELECTRIC CONTROL HANDLES

Easy Press Lever Design Reduces Fatigue



Cost Effective, Ergonomic Electric Handle Solution

Gorbel's **Soft Touch™ Electric Control Handles** are a stand alone product that can be used with any electric equipment. The handles are a complete plug-and-play solution that attach quickly and easily to any equipment. Our handles:

- Are engineered for easy use, reducing the potential for fatigue and repetitive stress injuries.
- Offer more flexibility in tooling choices and the ability to customize tooling for applications.
- May be used with iQ G-force® and Easy Arm® inputs.
- Cost less than most comparable handles.

Features and Benefits

Low Depression Force

- Our lever buttons are easy to press, requiring less than 1.5 lbs of depression force. This reduces fatigue and repetitive stress injuries of the hand and wrist.

High Quality, Long Lasting Switch

- The industry standard switch is durable and long lasting to provide maximum up time and minimal maintenance.

Flexible Configuration For Any Application

- There are five different all-electric handles to choose from. Custom pneumatic/electric combination handles are also available to meet complex control applications.
- Up to 4 levers per handle to fit most application needs.

Can Be Used With Any Electric Device

- Soft Touch handles™ control any electric-powered device made by other manufacturers within defined specs.





Switch Blocks



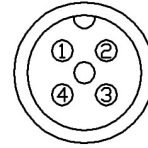
The cornerstone of our **Soft Touch™ Electric Control Handles** are the industry standard switches. Gorbel's switch blocks allow up to four switches to be mounted on a single handle in configurations of single-block, double-block, or a combination of both. The blocks are made up of a lightweight aluminum base which the switches attach to. The switches are also easily accessible and can be changed without removing the block from the handle.

Voltage & Current Capacity	240VAC @ 1.5 amps, 24VDC @ 3 amps
Switch Type	Momentary with form C contacts
Environmental	IP66, IP67
Certifications	UL, CSA, CE, CCC
Depression Force	1.5lbs

Contact Gorbel for more detailed specs

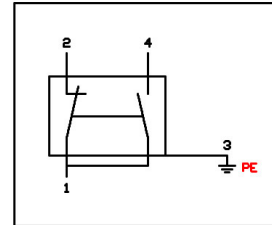
	Description	Part Number	Switches
	Single lever electric soft touch handle	88050	1
	Two lever electric soft touch handle	88060	1
	Three lever electric soft touch handle	88065	2
	Three lever electric soft touch handle	88560	2
	Four lever electric soft touch handle	88656	3

Cable Connections



Pin 1 - Brown
Pin 2 - White
Pin 3 - Blue
Pin 4 - Black

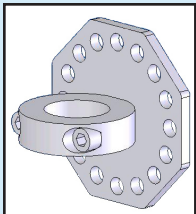
78705
AUX SWITCH, 4-PIN, SPDT



Part Number	Length*	Connector
78691	1 meter	Straight
78701	1 meter	Right Angle
78692	2 meters	Straight
78702	2 meters	Right Angle

*Consult factory for additional lengths

Additional Accessories



Handle Collar Clamps

We offer easy compression collars to mount the handle to end effectors constructed from round tube.

- Available to fit most standard tube sizes.
- May also be used with Gorbel's Up/Down G-Force® Control Handle



Angled Levers

For added convenience, you can order your handle with optional angled levers at no additional cost.

- For handles with 1, 2, or 3 levers, the lever in position 1 (the lever furthest to the left) can be angled.
- For handles with 4 levers, the angled lever is available for positions 1 or 4 (the levers on either end).