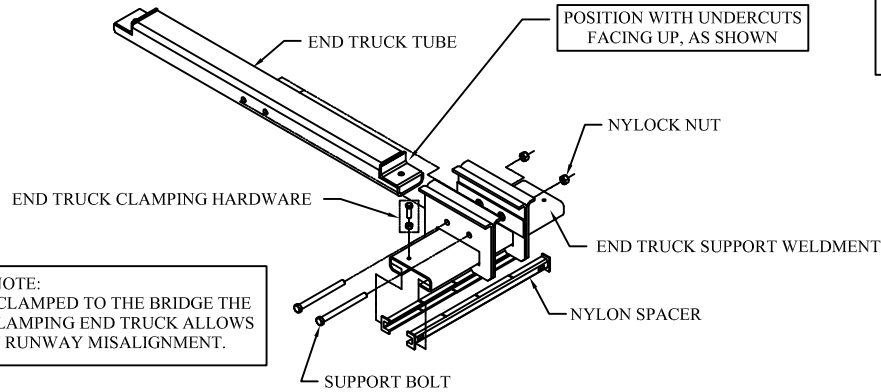


REV	DATE	DESCRIPTION	REV BY
A	1/6/20	REVISED 1/2" WASHER LOCATION	TMC



CLEVELAND TRAMRAIL INSTALLATION BULLETIN

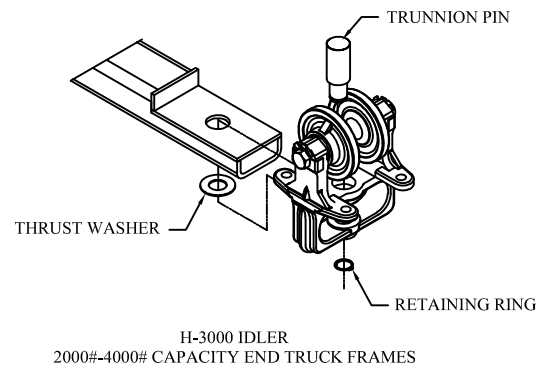
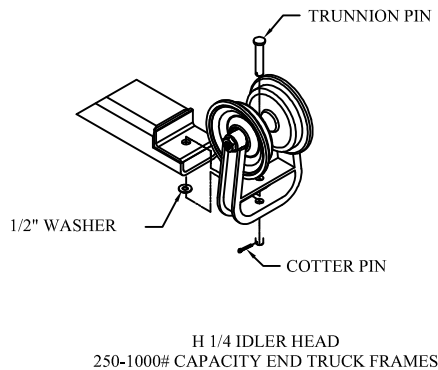
1. ASSEMBLE END TRUCK FRAME



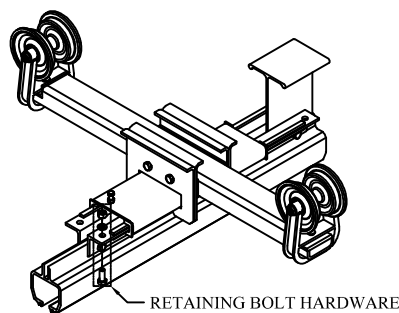
***** WARNING *****
DO NOT "OVER-TIGHTEN" NYLOCK NUT. COULD CAUSE DAMAGE TO END TRUCKS. NYLOCK NUT CAN ONLY BE USED ONCE. IF THIS ITEM IS DISASSEMBLED, THEN THE NUT MUST BE REPLACED.

NOTE:
ONLY ONE END TRUCK IS CLAMPED TO THE BRIDGE THE OTHER IS NOT. THE NON CLAMPING END TRUCK ALLOWS ADJUSTMENT FOR ANY RUNWAY MISALIGNMENT.

2. ASSEMBLE IDLER HEADS TO END TRUCK FRAME



3. ASSEMBLE END TRUCK TO BRIDGE 4. INSTALL RETAINING BOLT



NOTE:
END TRUCK TUBE LENGTH, END TRUCK SUPPORT WELDMENT AND IDLER HEAD WILL VARY WITH BRIDGE LENGTH AND BRIDGE CAPACITY. ASSEMBLY WILL BE THE SAME AS THE CONFIGURATION SHOWN ON THIS PAGE.

***** WARNING *****
FAILURE TO INSTALL THE RETAINING BOLT ASSEMBLIES AT EACH END TRUCK MAY RESULT IN THE BRIDGE, HOIST, AND LOAD FALLING TO THE FLOOR.

UNLESS OTHERWISE SPECIFIED

ALL DIMENSIONS ARE IN INCHES

BREAK ALL SHARP EDGES
.010 MAXIMUM

CONFORMANCE TO STANDARDS:
ASME Y14.5M
ANSI/AWS D14.1

TOLERANCE

1/X ± 1/16

.XX ± .010

.XXX ± .005

X' ± 1'

CLEVELAND TRAMRAIL BY GORBEL

600 FISHERS RUN
P.O. BOX 593
FISHERS, N.Y. 14453-0593

TITLE: HYBRID END TRUCK ASSEMBLY

MAT'L: ASSEMBLE AS NOTED

DWN. BY: TMC

DATE: 5/8/13

QTY. -

W.O.# -

P/N: HYBRID-ET-INS

THIS DRAWING EMBODIES A CONFIDENTIAL PROPRIETARY DESIGN ORIGINATED BY GORBEL INC. AND ALL DESIGN, MANUFACTURING, REPRODUCTION, USE, AND SALES RIGHTS REGARDING THE SAME ARE EXPRESSLY RESERVED. IT IS SUBMITTED UNDER A CONFIDENTIAL RELATIONSHIP FOR A SPECIFIC PURPOSE, AND THE RECIPIENT AGREES BY ACCEPTING THIS DRAWING NOT TO SUPPLY OR DISCLOSE ANY INFORMATION REGARDING IT TO ANY UNAUTHORIZED PERSON, OR TO INCORPORATE IN OTHER PROJECTS ANY SPECIAL FEATURES PECULIAR TO THIS DESIGN. ALL PATENT RIGHTS HERETO ARE EXPRESSLY RESERVED BY GORBEL INC., FISHERS, NY.