

G-Force® & Easy Arm® VNC Viewer Guide



VNC Viewer Installation Guide

The Smart Connect User Interface is an application that runs on the CPU (Central Processing Unit) of any Q2 or iQ2 G-Force® or Easy Arm®. This Interface can be accessed with a Windows, iOS or Android computer or tablet running a VNC (Virtual Network Connection) viewer and connected to the G-Force® or Easy Arm® using either a wired or wireless connection.

There are many VNC viewers available for download. Some are paid and some are free. The person who is connecting to the G-Force® or Easy Arm® may use any VNC viewer they prefer as long as it will allow them to connect, view, and interact with the G-Force® Smart Connect User Interface. The user is responsible for ensuring their computer or tablet is compatible with the VNC viewer they choose. The user is also responsible for ensuring the settings and configuration of their computer or tablet is compatible with both the VNC viewer they choose and the G-Force® or Easy Arm®. Below are some recommendations and requirements.

Basic requirements:

- Computer or tablet running one of the following operating systems
 - Windows 10 or higher
 - iOS - current version
 - Android - current version
- Computer or tablet must have Wi-Fi capability to wirelessly connect to a G-Force® or Easy Arm®
- For a wired connection, the computer or tablet must have the ability to connect via Ethernet
- For a wired connection, the user must have administrator rights to change TCP/IP settings to TCP/IP v4 (TCP/IP v6 will not work)

Helpful information and tips:

- For the best experience, Gorbel® recommends using a Windows based computer. There are more VNC viewer choices for the Windows operating system and Gorbel®'s software development and testing was done using Windows based computers.
- Apple and Android based devices, including cell phones, have been used by customers in the field with varying degrees of success. If the user is able to find the right combination of Apple or Android device and a VNC viewer that works with both their device and the G-Force®/Easy Arm®, then using it is OK.
- No other operating systems, other than Microsoft Windows, Apple iOS and Android are known to be compatible with the G-Force® and Easy Arm® Smart Connect User Interface application and are not recommended by Gorbel®.

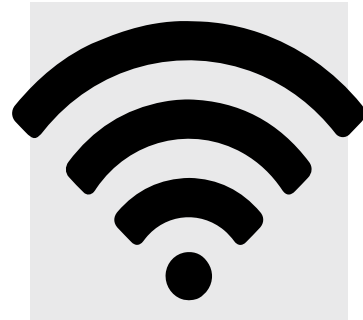


Important Tip: *VNC viewers are third party software applications. Gorbel® has no control over updates to these applications that may affect their functionality. Gorbel® will maintain overall familiarity with the functions and use of Tight VNC. Before calling Gorbel® for help connecting to a G-Force® or Easy Arm®, please download and install the Tight VNC viewer on a windows-based computer capable of connecting to the unit you are working with.*

Below are several VNC viewers that Gorbel® knows to be compatible with the G-Force®/Easy Arm® and customers have used with success.

- **Tight VNC for Windows (64bit)** <https://www.tightvnc.com/download.php> - Gorbel®'s preferred choice. This is a free VNC viewer for Windows operating systems only.
- **Ultra VNC** <https://www.uvnc.com/downloads/ultravnc.html> - This is a free VNC viewer for Windows operating systems only.
- **Mocha VNC** http://www.mochasoft.com/iphone_vnc.htm - This VNC viewer has been successfully used with Apple iPads and iPhones. Mocha VNC is a paid app but does have a lite version (Mocha VNC Lite) that is free as a trial version.
- **bVNC** https://play.google.com/store/apps/details?id=com.iiordanov.freebVNC&hl=en_US&gl=US - This viewer has been used with success by customers with Android based devices.

This guide covers the initial connection of the recommended VNC viewers to connect to your G-Force® or Easy Arm® using a wireless connection. Wireless connection is easiest and most used method, if you need to use a wired connection, refer to the G-Force® or Easy Arm® manual.



Wireless Connection Enabled

While there are many viewers available, the ones recommended in this guide have been tested to work with the Access Points of both actuators. For detailed setup instructions, refer to the G-Force® Q2 iQ2 Manual or the Easy Arm® Q2 iQ2 Manual.

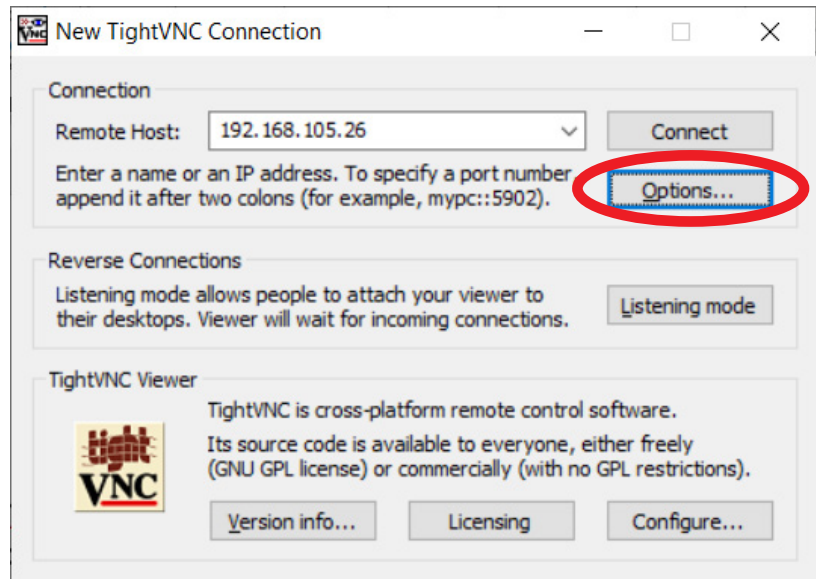
Important note: When making changes through the VNC viewer, you will save settings and the Actuator will restart. Always check the Wi-Fi connection of the device you are using, Windows, Android, or IOS. Often while the actuator is rebooting, your device will connect to another available Wi-Fi network. If this happens you will need to set it back to the Actuator's Wi-Fi Access Point to resume your connection.

Contents

TightVNC for Windows	page 4
UltraVNC for Windows	page 6
MochaLite VNC for IOS	page 9
bVNC for Android	page 13

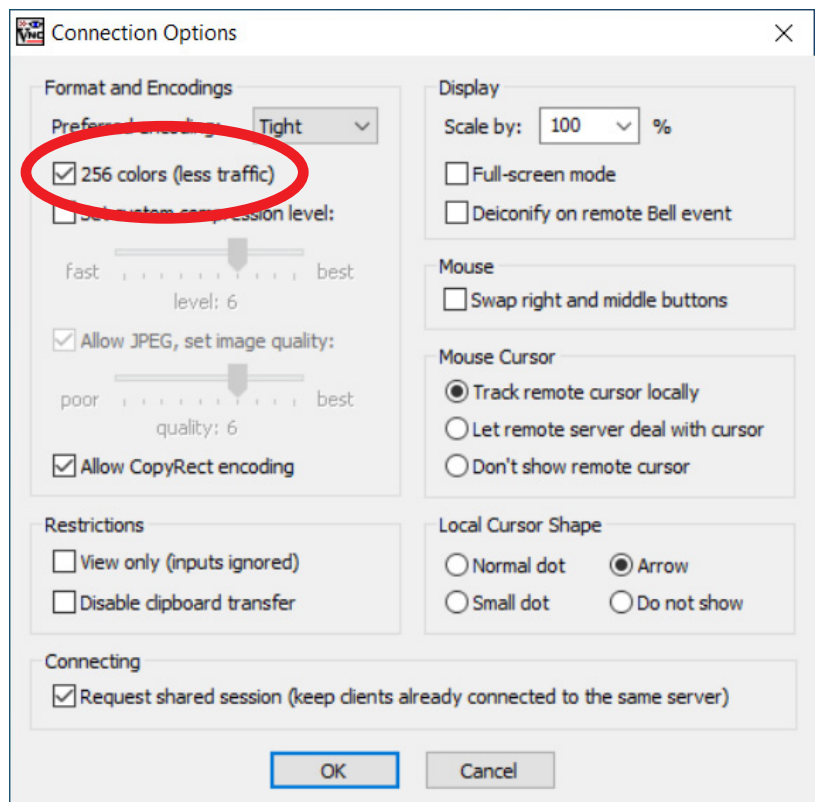
TightVNC Viewer for Windows

After installation of TightVNC viewer to your Microsoft Windows-based computer, you need to configure the **Connection Options**. First enter the IP Address of the G-Force® in the **Remote Host** line (unless the IP address had been changed, the default is 192.168.105.26). Next, select **Options** and a new screen will open (fig. 2)



[Figure 1]

In **Connection Options**, make sure **256 colors** is selected or you may experience a black screen when connecting to the G-Force®. Select **Ok**, then select **Connect** as seen in Fig 1.

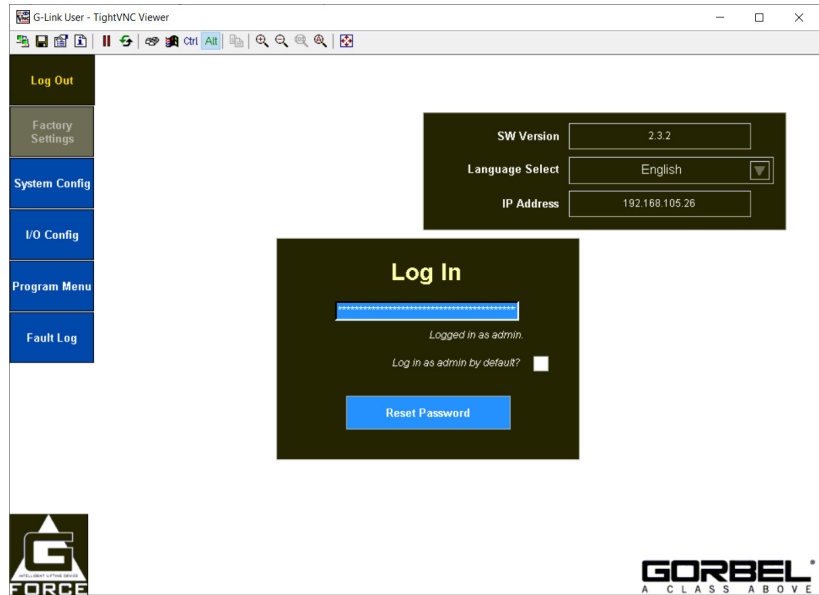


[Figure 2]

TightVNC Viewer for Windows

Since the G-Force® is on its own private network, connect your device to the **G-Force® Access Point** in your computer's Wi-Fi settings. Launch the **VNC viewer** to connect to address 192.168.105.26

Once the VNC is connected to the G-Force®, log in as administrator by entering the number **2** in the “**Log In**” box and you will be switched from **User** to **Administrator** rights. (Fig. 3).



[Figure 3]

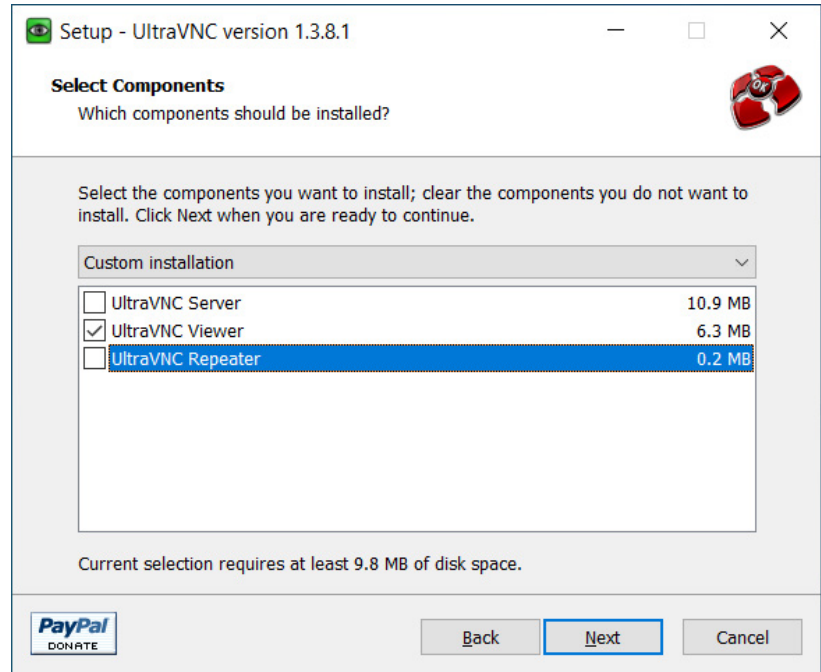
Refer to the G-Force® Q2_iQ2 Manual for detailed setting information.



Important note: Making certain changes, such as I/O functionality, will automatically reboot the CPU, sometimes causing a loss of WiFi connection. Your device may reconnect to the next available wireless connection while the G-Force®/Easy Arm® CPU is reconnecting to the wireless access point. If you are unable to reconnect to the User Interface via the VNC viewer, verify the Wi-Fi connection on your device is connected to the G-Force®/Easy Arm® wireless access point.

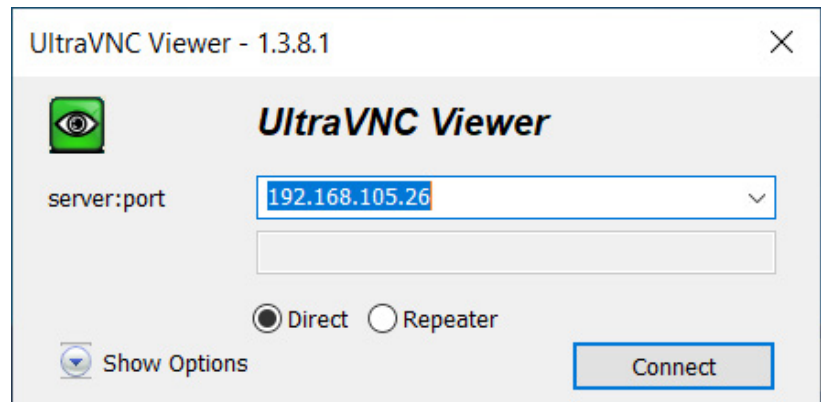
UltraVNC for Windows

After downloading the **UltraVNC installation** file and running the install program, only select the **UltraVNC Viewer** for use with the G-Force® and Easy Arm®. (Fig. 4)



[Figure 4]

After the installation is complete, run the **UltraVNC Viewer** program. The default settings of the **UltraVNC viewer** should work with most Windows applications. A window will pop up requesting the server port. Enter the IP address of the G-force® you want to connect with. The default is 192.168.105.26. Select the Direct radio button. (Fig. 5)



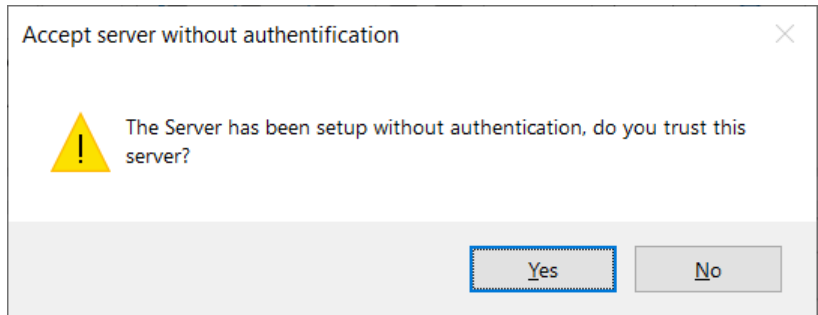
[Figure 5]



Questions? Call After the Sale Service: 800-821-0086

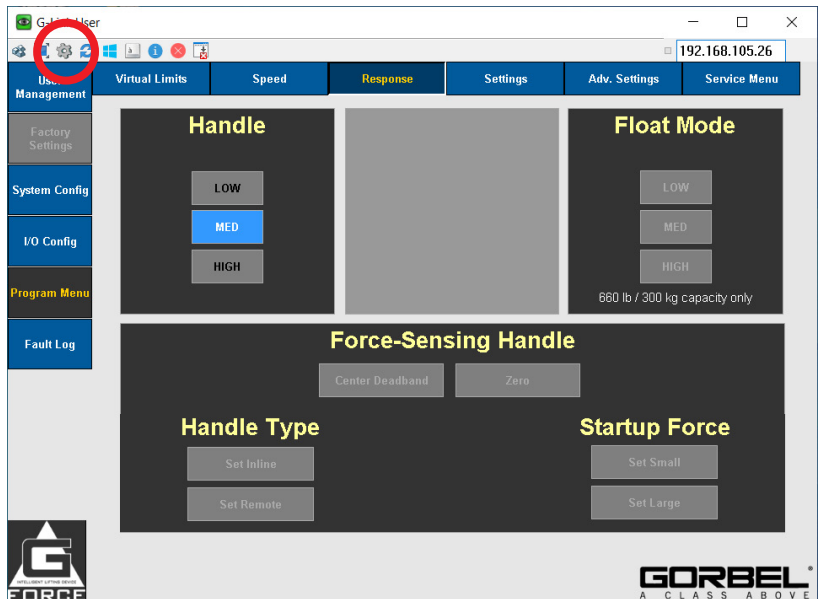
UltraVNC for Windows

You will get a **security authentication window** and you select **Yes**. (Fig. 6) The **G-Force® interface screen** should pop open after confirming the message.



[Figure 6]

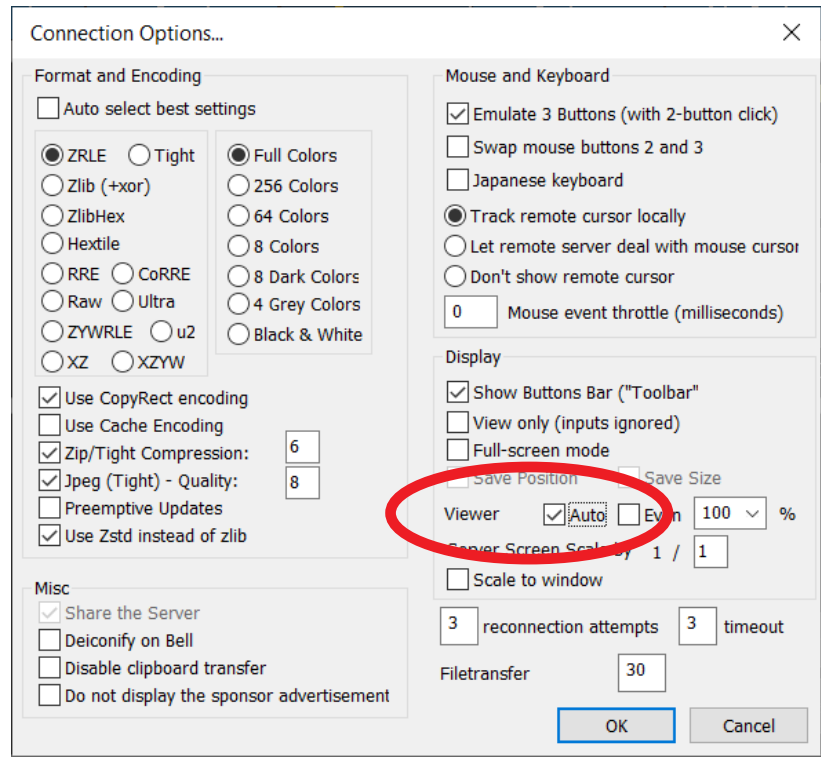
Once the **VNC screen** opens you can select the **settings icon** as seen in figure 7 to adjust the display.



[Figure 7]

UltraVNC for Windows

Once in the **Connection Options** screen select the **Auto** box next to **Viewer**. (Fig 8)



[Figure 8]



Important note: Making certain changes, such as I/O functionality, will automatically reboot the CPU, sometimes causing a loss of WiFi connection. Your device may reconnect to the next available wireless connection while the G-Force®/Easy Arm® CPU is reconnecting to the wireless access point. If you are unable to reconnect to the User Interface via the VNC viewer, verify the Wi-Fi connection on your device is connected to the G-Force®/Easy Arm® wireless access point.

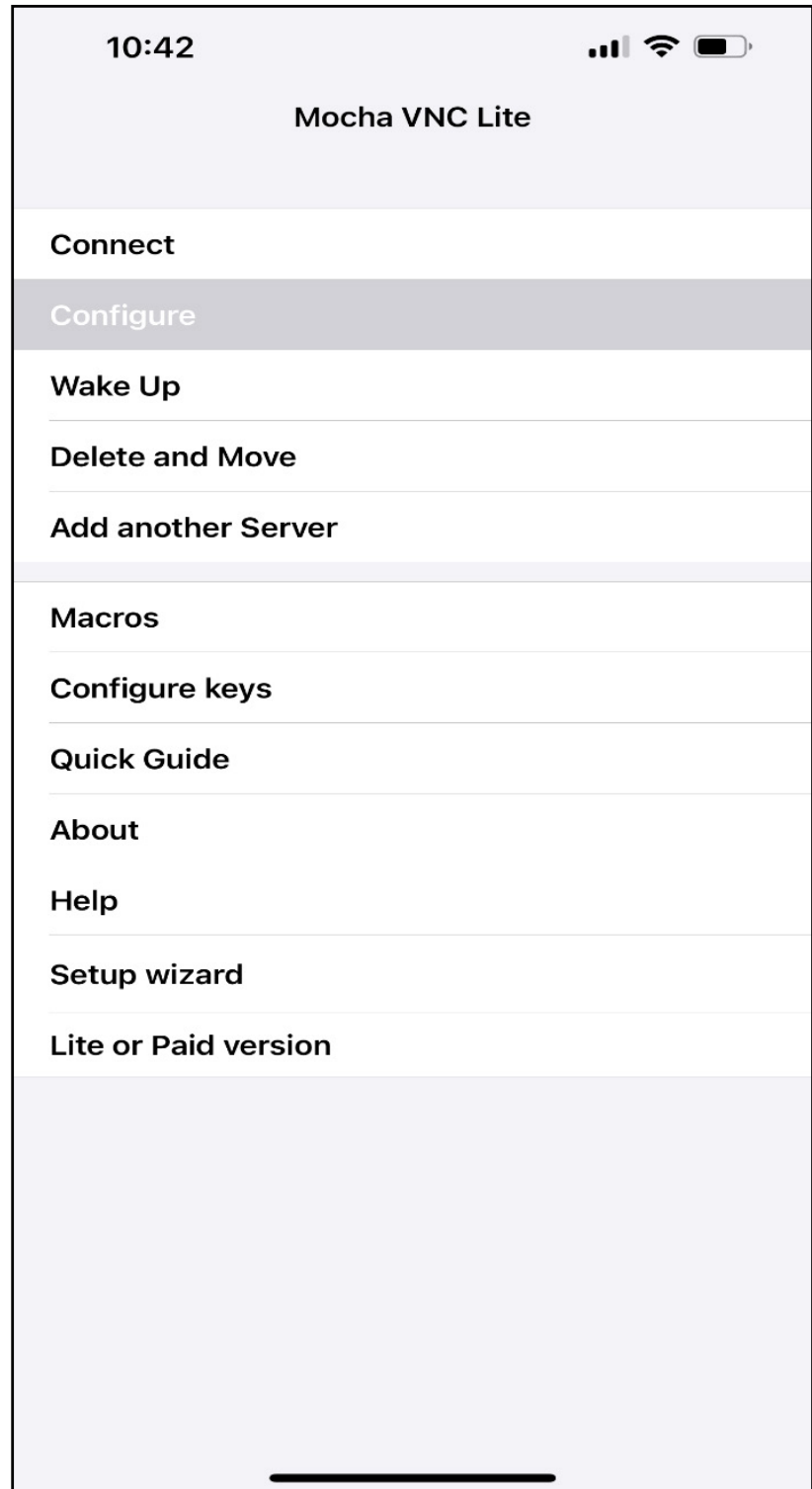
Mocha Lite VNC for IOS

After installation of **Mocha Lite VNC** on your IOS device, you must first configure the viewer.

Launch the application and you will see the following screen (fig 9).

Select the **Configure** option.

Note: *Mocha Lite VNC is a free version of Mocha VNC. The connection will automatically time out after 5 minutes. You will just need to reconnect once it times out to resume your session.*



[Figure 9]

Mocha Lite VNC for IOS

Once in the **Configure** screen you will need to turn off **Mac OS X Sign on**. Also, under **VNC Password** enter **#**. (Fig 10)

Enter in the **IP Address** of the G-Force® Actuator.

10:42

[Back](#) [Help](#)

Address 192.168.105.26
Mac/PC Name/IP

Server Port 5900
Default port is 5900

Mac OS X Sign on
Use Mac user ID and password

VNC Password #
(#=none)

Mac OS X user
Mac OS X User ID

Mac OS X Password
(#=none)

Mac Address <optional>
Only used for WOL

WOL Port 9
Wake on LAN port

WOL Broadcast
Wake on LAN uses broadcast

WOL send ping
Wake on LAN uses ping

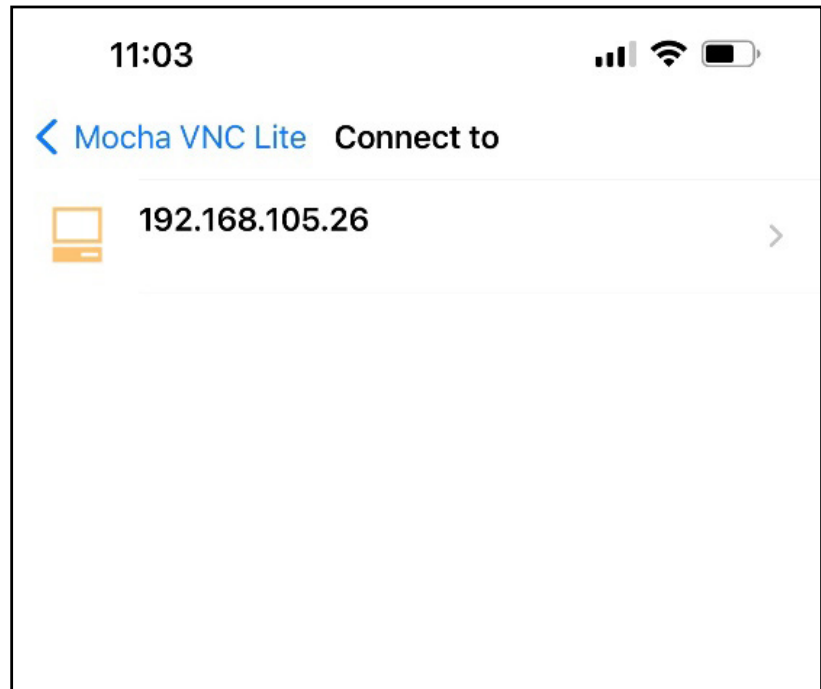
Name <optional>
Alias name

[Figure 10]

Mocha Lite VNC for IOS

After making the changes on the **Configure** screen, select the **back arrow**. You will return to the first screen. Now select **Connect** and the you will see the following screen. (fig 11.)

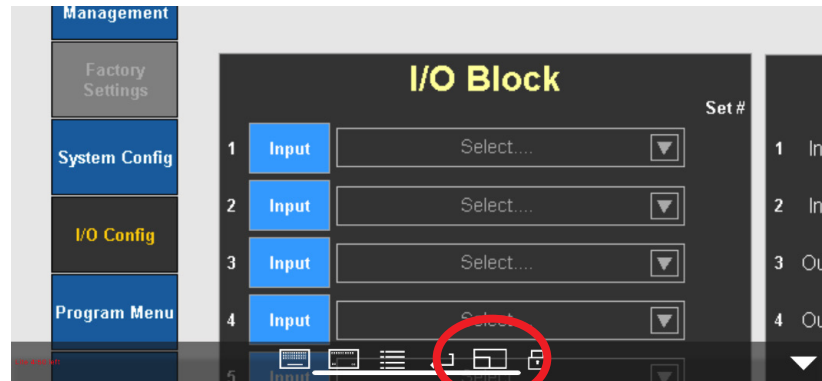
Select the **IP address** of the device as seen in figure 11.



[Figure 11]

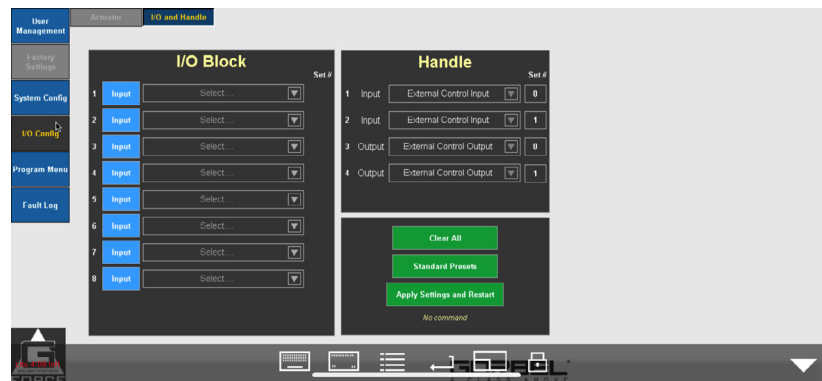
Mocha Lite VNC for IOS

When the connection is initially made, the screen will appear difficult to see. Rotate your device to the **landscape position** and select the **icon** circled below. This will fit the screen to your device. (Fig 12)



[Figure 12]

Your screen should now appear like this:



[Figure 13]



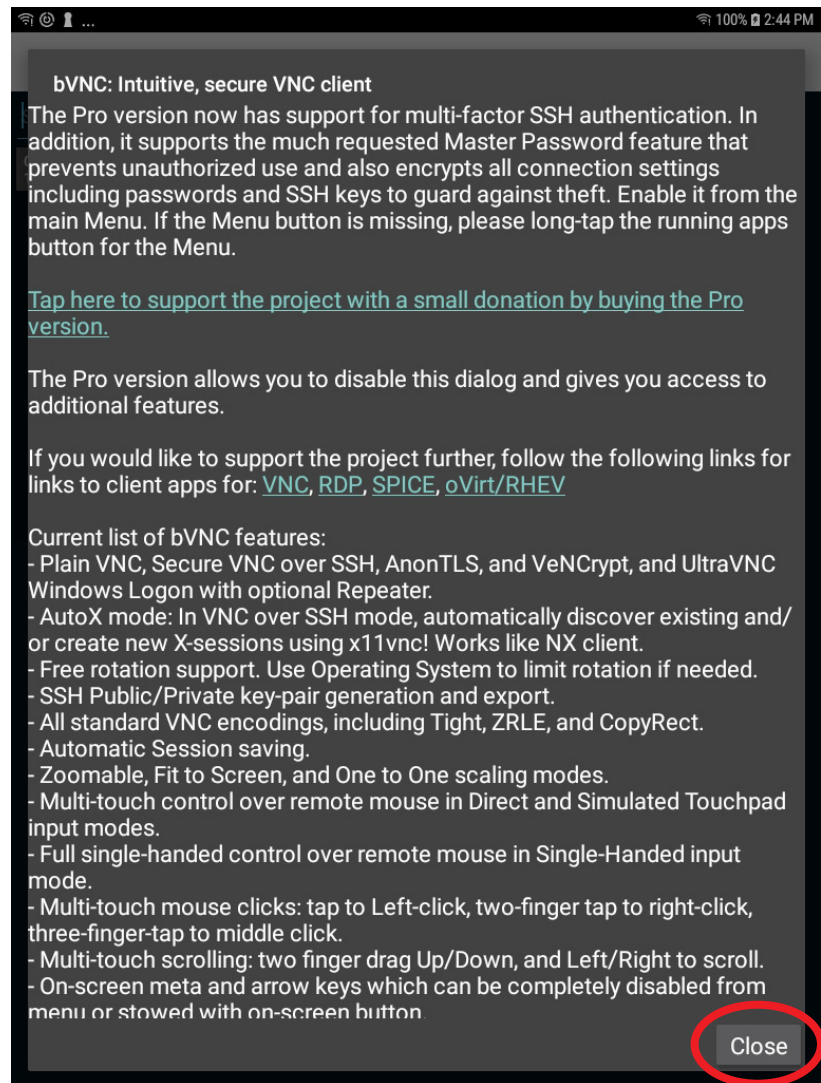
Important note: Making certain changes, such as I/O functionality, will automatically reboot the CPU, sometimes causing a loss of WiFi connection. Your device may reconnect to the next available wireless connection while the G-Force®/Easy Arm® CPU is reconnecting to the wireless access point. If you are unable to reconnect to the User Interface via the VNC viewer, verify the Wi-Fi connection on your device is connected to the G-Force®/Easy Arm® wireless access point.

Android Based Devices

Download and install the bVNC free app located at the Google store here:

https://play.google.com/store/apps/details?id=com.iordanov.freebVNC&hl=en_US&gl=US

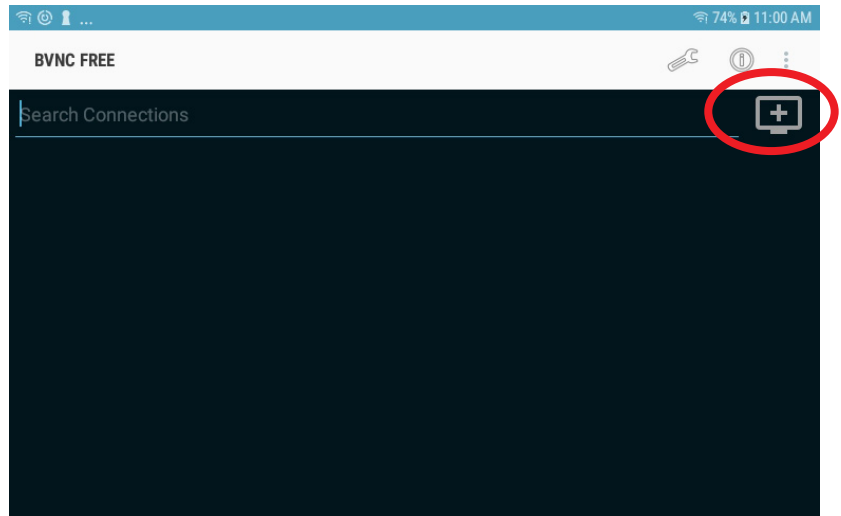
After installation is complete, launch the viewer. Initially an **informational screen** will appear, just select '**Close**' in the bottom right corner and the **connection screen** will appear. (Figure 14).



[Figure 14]

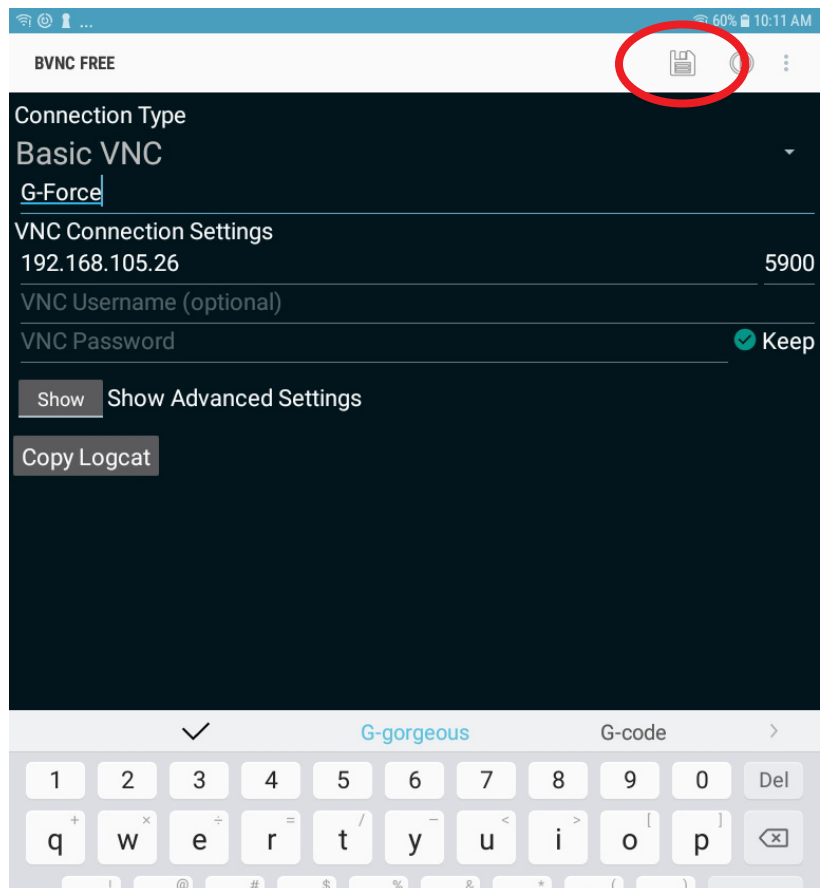
Android Based Devices

Select the **+** box in the upper right corner to add a connection. A new screen will open to type in the **IP Address** of the connection (**192.168.105.26**) and a name of the connection if desired. (The connection in figure 16 is named **“G-Force”** for example purposes.)



[Figure 15]

Once the **name** and **IP Address** are filled in, select the **save icon** at the top of the screen. (Fig 16)

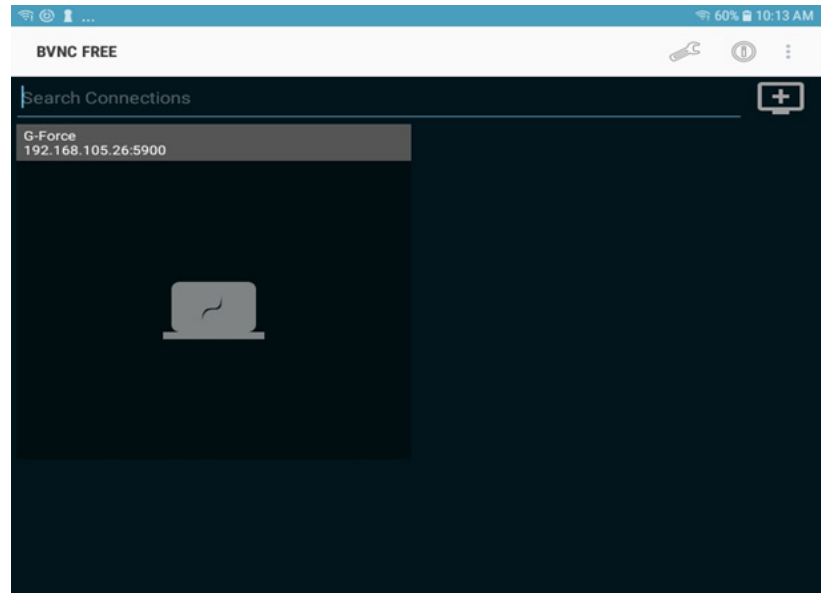


[Figure 16]

Android Based Devices

Selecting the **named connection** or the **laptop icon** will launch the connection to the G-Force® or Easy Arm® actuator access point once your Android device is set to the correct **Wi-Fi network**. (Fig 17)

Refer to the G-Force® Q2_iQ2 Manual Appendix C or the Easy Arm® Q2_iQ2 Manual.



[Figure 17]

You should then see the **Login screen**. The free version of bVNC will time out its connection after 5 minutes. Just reconnect if you still need to make changes.

